



EQUIPAGGIAMENTI
TECNICI
LAVAGGIO

30.6100.00
PISTOLA VAPORE RV23
STEAM GUN RV23

(I)

(GB)

1

24/09/08

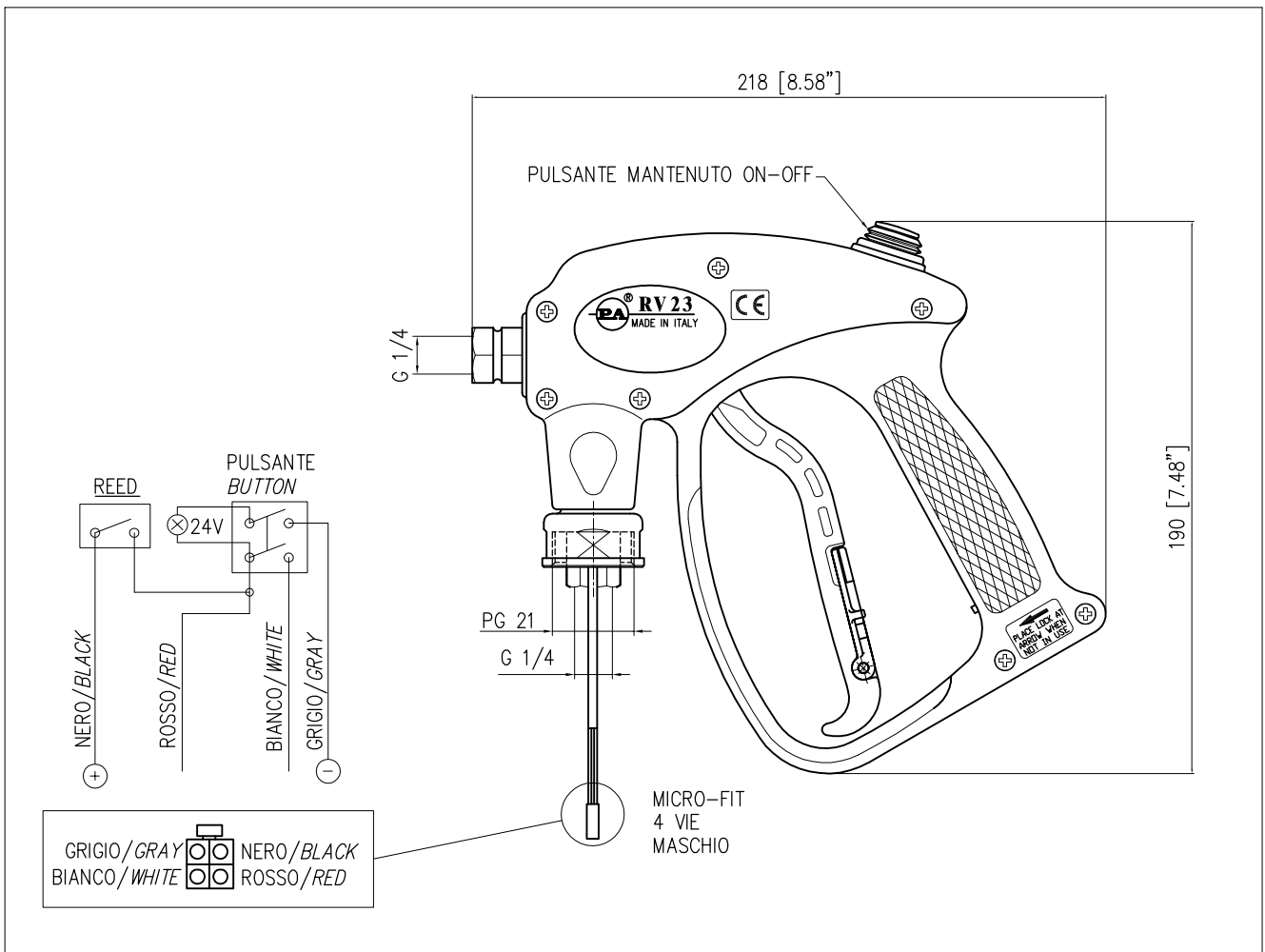
SPECIFICHE TECNICHE
SPECIFICATION



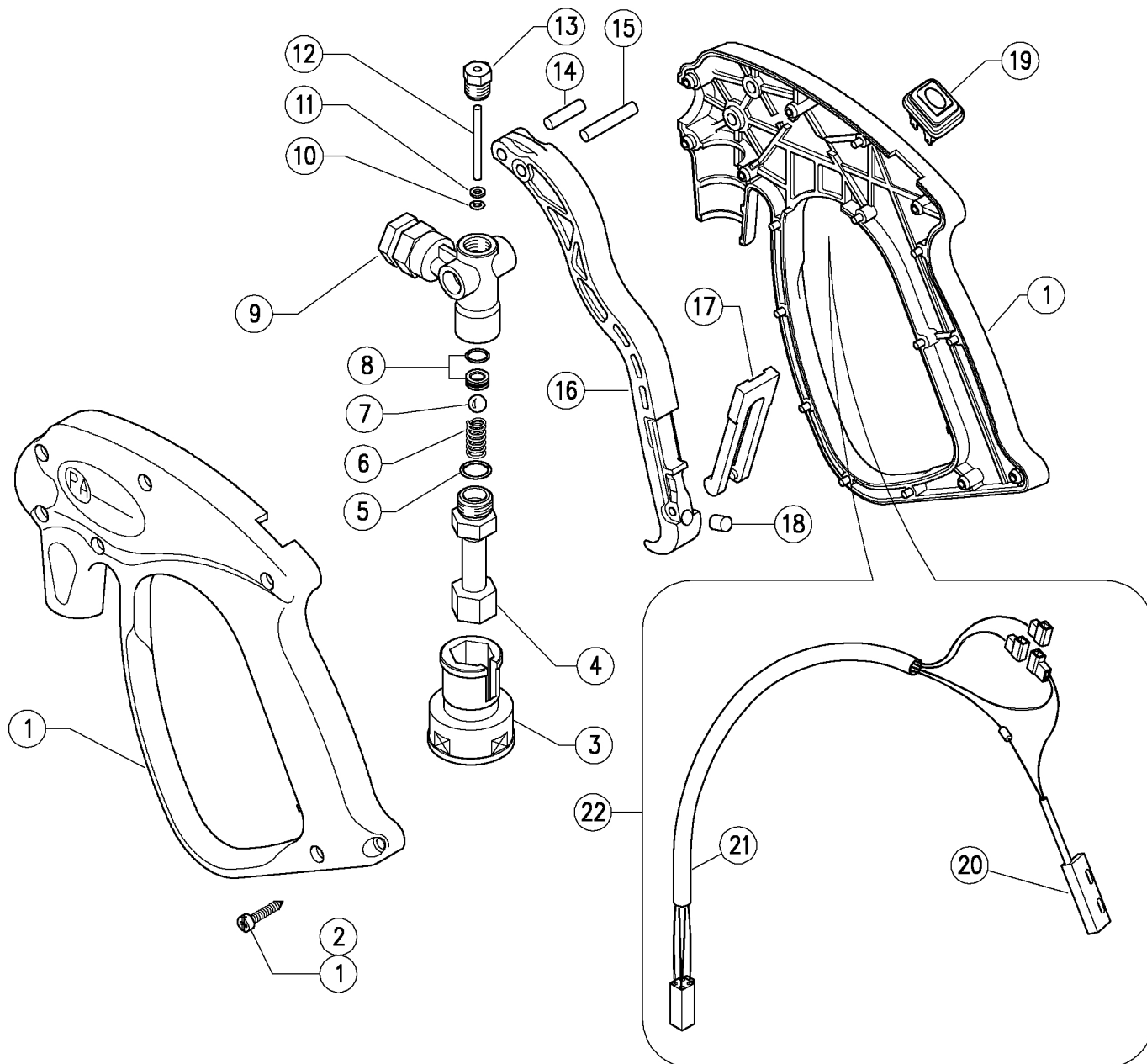
- PRESSIONE NOMINALE RATED PRESSURE	10 bar - 1 MPa (145 psi)	
- PORTATA MASSIMA MAX FLOW RATE	35 Kg/h (77 lb/h)	
- TEMPERATURA MASSIMA MAX WORKING TEMPERATURE	180° C (356 °F)	
- PULSANTE LUMINOSO PER ASPIRAZIONE PRODOTTO CHIMICO LIGHT BUTTON FOR CHEMICAL PRODUCT INTAKE	24 V 24 V	Classe di protezione IP 65 Protection class IP 65
- INTERRUTTORE MAGNETICO CON AMPOLLA REED MAGNETIC REED SWITCH	V=24V	Classe di protezione IP 67 Protection class IP 67
- INTERRUTTORI IN SERIE - CORRENTE MASSIMA DI COMMUTAZIONE SERIES SWITCHES- MAX COMMUTING STREAM	I = 0.4A	
- SCOCCA IN MATERIALE ANTIURTO E RESISTENTE AL CALORE HOUSING MATERIAL HEAT RESISTANT AND SHOCKPROOF		
- NESSUNA TRASMISSIONE DI CALORE ALLA MANO DELL'OPERATORE NO TRANSMISSION OF HEAT TO THE OPERATORS HAND		
- GRADO DI PROTEZIONE: IPX3 PROTECTION DEGREE: IPX3	- CLASSE DI PROTEZIONE: III PROTECTION CLASS: III	

MISURE D'INGOMBRO

OVERALL DIMENSIONS

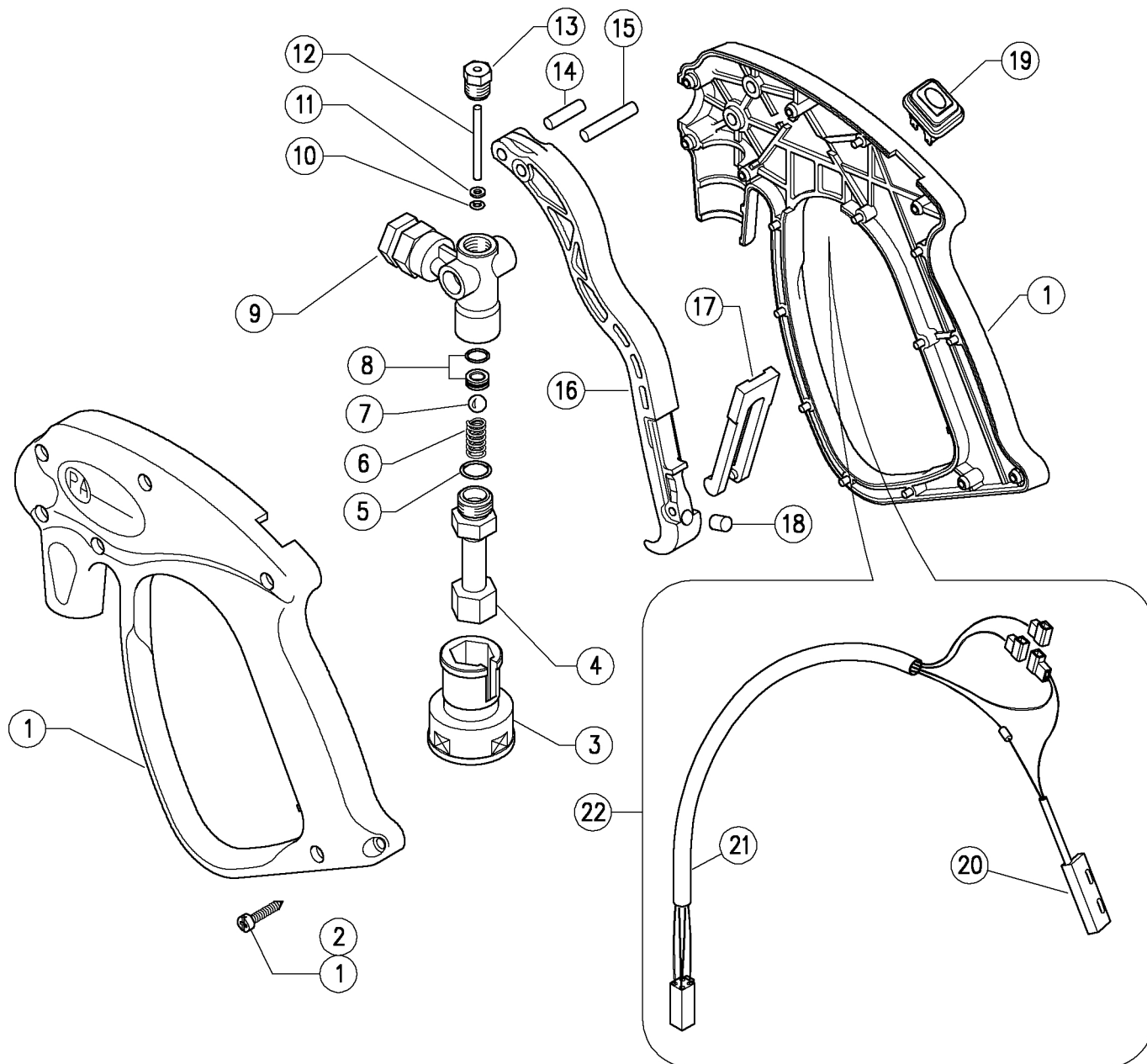


30.6100.00 RV23 vapore G1/4 F+1 inter.el+1



Pos.	Codice	Descrizione	Q.tà	K1	K2	K3	K4	Pos.	Codice	Descrizione	Q.tà	K1	K2	K3	K4
1	30.6114.24	Kit scocca RV23 +viti- 1puls.	1				1	11	10.4018.00	An. anties. 3,2x7,5x1,2 mm	1				10
2	16.3075.51	Vite autofil. DIN7981 3,5x18 mm inox	7				10	12	30.0411.51	Pistone 3 mm inox	1				10
3	30.6104.84	Raccordo protezione termica, plast.	1				5	13	30.4115.31	Tappo ant. M10x1 ott.	1				10
4	30.6106.31	Nipplo RV23 G1/4 F	1				5	14	30.0412.51	Spina cil. 5x20mm inox	1				10
5	10.3020.10	An.OR 1,5x10 mm Vi 70	1				10	15	30.4114.51	Spina cil. 5x33 mm inox	1				10
6	30.0001.51	Molla 1,4x7,8x13,5 mm inox	1				10	16	30.6107.84	Leva RV23 nera forata	1				10
7	14.7448.00	Sfera 5/16" inox	1				10	17	30.1510.84	Sicura PA rossa	1				10
8	30.6112.20	Sede 6x10,5 mm +Or Viton	1				10	18	30.5821.51	Magnete 5x8 mm	1				5
9	30.6105.35	Corpo RV23 G1/4 F ott.	1				3	19	12.5022.00	Interruttore con spia -on/off mantenuto	1				5
10	10.3165.00	An.OR 2,62x2,84 mm Vi 70	1				10	22	12.5023.04	Cavo 4x0,5 360mm + sensore	1				3

30.6100.00 RV23 Steam gun 1/4F Bsp



Pos.	P/N	Description	Q.ty	K1	K2	K3	K4		Pos.	P/N	Description	Q.ty	K1	K2	K3	K4	
1	30.6114.24	Casing Kit -RV23 +screws	1					1	11	10.4018.00	Back-up ring, 3,2x7,5x1,2 mm	1					10
2	16.3075.51	S/tapping screw, DIN7981 3,5x18 mm Sst.	7					10	12	30.0411.51	Piston, 3 mm Sst.	1					10
3	30.6104.84	Thermo-protection coupling, plast.	1					5	13	30.4115.31	Front Plug, M10x1 brass	1					10
4	30.6106.31	Coupl. -RV23 1/4 Bsp F bras.	1					5	14	30.0412.51	Sst.parallel pin, 5x20mm	1					10
5	10.3020.10	O-ring, 1,5x10 mm Vi 70	1					10	15	30.4114.51	Parallel pin, 5x33 mm Sst.	1					10
6	30.0001.51	Spring, 1,4x7,8x13,5 mm Sst.	1					10	16	30.6107.84	Trigger -RV23 black, pierced	1					10
7	14.7448.00	Ball, 5/16" Sst.	1					10	17	30.1510.84	Safety latch, PA red	1					10
8	30.6112.20	Seat, 6x10,5 mm + O-ring, Viton	1					10	18	30.5821.51	Magnet, 5x8 mm	1					5
9	30.6105.35	Housing -RV23 1/4 BSP F brass	1					3	19	12.5022.00	Ele. switch with pilot lamp	1					5
10	10.3165.00	O-ring, 2,62x2,84 mm Vi 70	1					10	22	12.5023.04	Cable 4x0,5 360mm + magnetic sensor	1					3

P.A. SpA EQUIPAGGIAMENTI TECNICI DEL LAVAGGIO

Via Milano, 13 42048 Rubiera - (RE) ITALY
Tel +39 0522 623611 (ric aut) - Fax +39 0522 629600
Info@pa-etl.it - www.pa-etl.it

**COMPANY WITH
QUALITY SYSTEM
CERTIFIED BY DNV**

= ISO 9001 =